

# PHOTOMETRIC TEST REPORT

---

DECOR PRO ROUND FLUSH  
FIXED - TEXTURED WHITE -  
4002883

astro

## DECOR PRO ROUND FLUSH FIXED -

astro

### LIGHT EFFICIENCY:

102 Lumen/Watt

### LIGHT QUALITY:

CRI: 96.4

### COLOR TEMPERATURE:

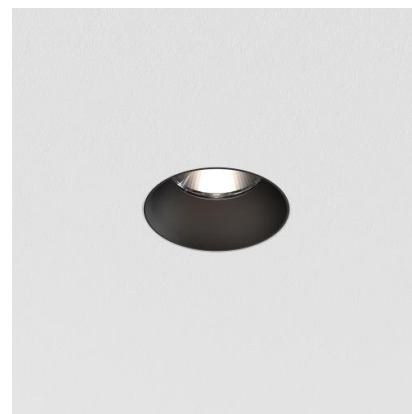
2695 K

OUTPUT: 1213 lm

PEAK: 6714 cd

POWER: 11.9 W

PF: 0.95



Tracking number: [n/a](#)

Product name:

Decor Pro Round Flush Fixed - Textured White - 4002883

Item number:

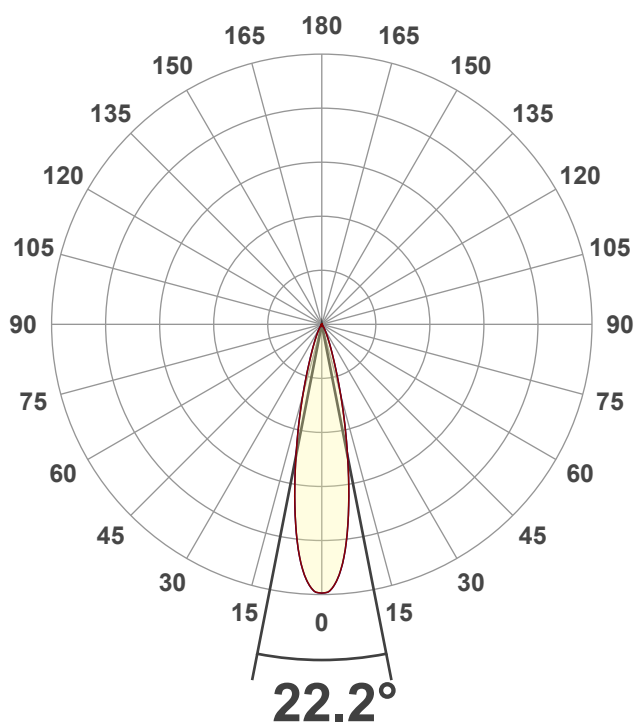
DRFF-TW-HE27G1-15G1-X-D1

Date and time:

31/01/2025 10:32:14

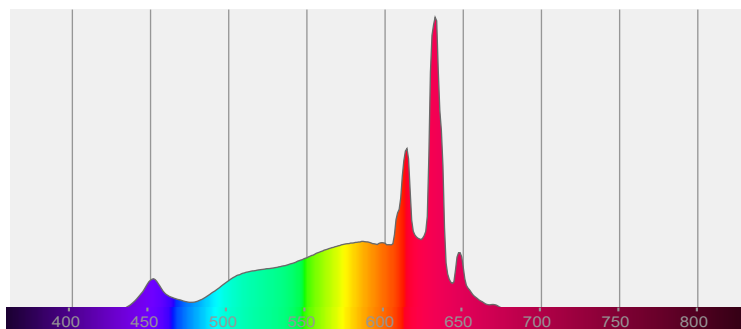
Description:

IP20 LED Downlight

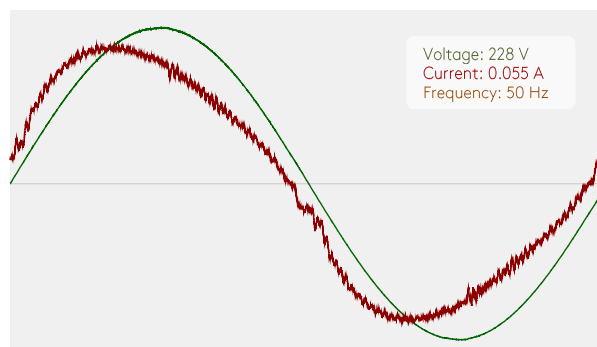


CIE 1931  
x: 0.461  
y: 0.411

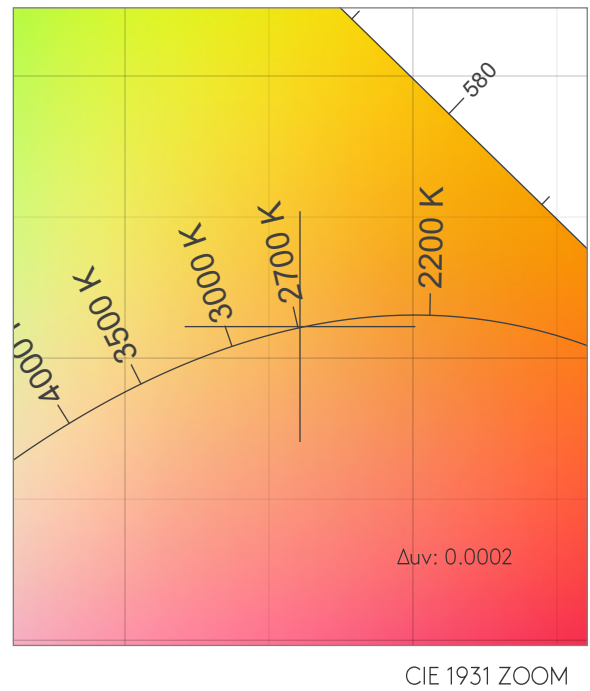
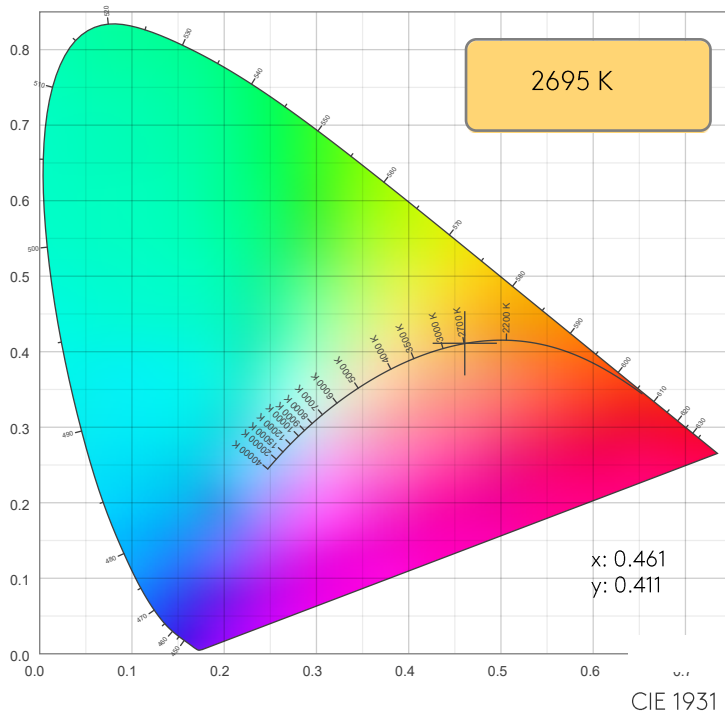
### SPECTRA



### POWER

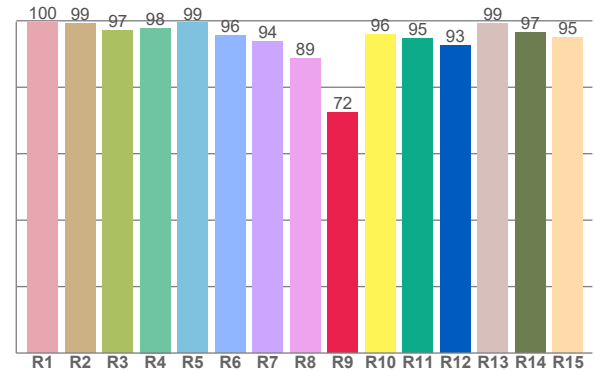
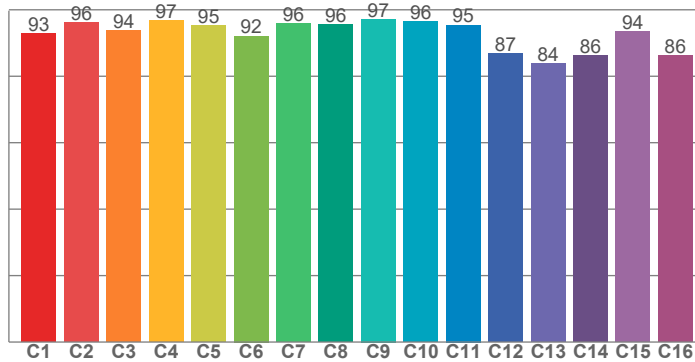


## COLOR DETAILS



TM30: 93.3

CRI: 96.4 (R1-R8)



CRI R values, only R1-R8 are used to calculate final CRI value

R1	R2	R3	R4	R5	R6	R7	R8	R9	R10	R11	R12	R13	R14	R15
99.6	99.1	97.0	97.8	99.4	95.6	93.8	88.6	72.5	95.9	94.7	92.6	99.3	96.5	94.9

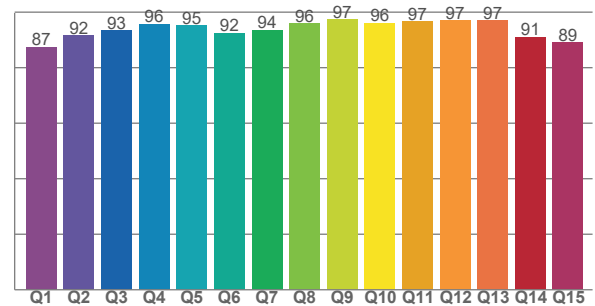
TM30 C values, 16 binned values out of total of 99 C values

C1	C2	C3	C4	C5	C6	C7	C8	C9	C10	C11	C12	C13	C14	C15	C16
92.8	96.2	93.9	96.7	95.2	92.1	95.9	95.6	97.2	96.4	95.4	87.0	83.9	86.3	93.5	86.2

CQS Q values

Q1	Q2	Q3	Q4	Q5	Q6	Q7	Q8	Q9	Q10	Q11	Q12	Q13	Q14	Q15
87.4	91.5	93.4	95.8	95.1	92.5	93.6	95.8	97.3	96.1	96.7	96.9	96.9	91.0	89.0

CQS: 92.9



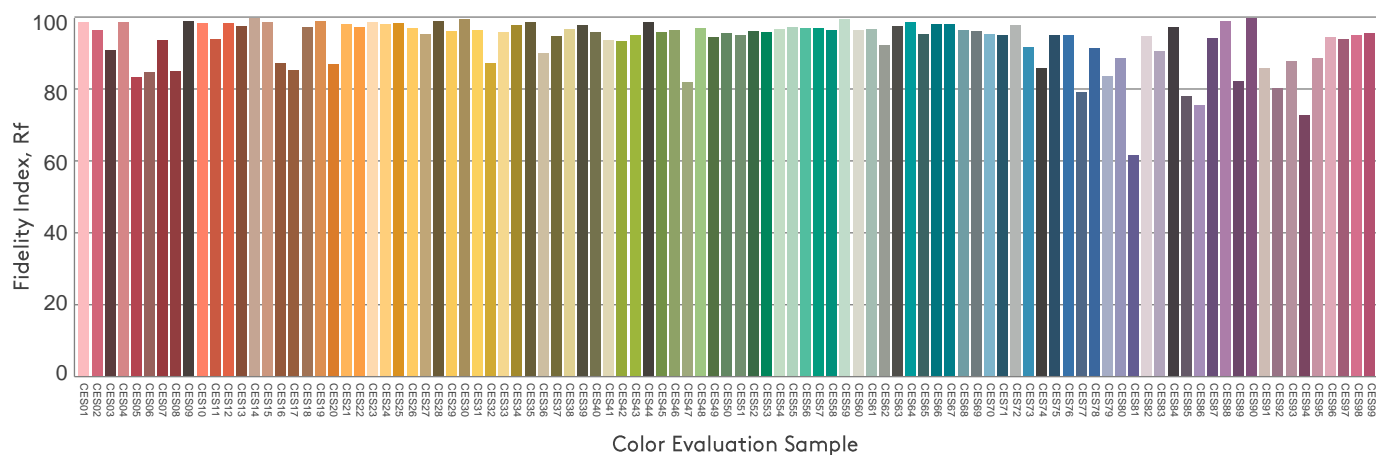
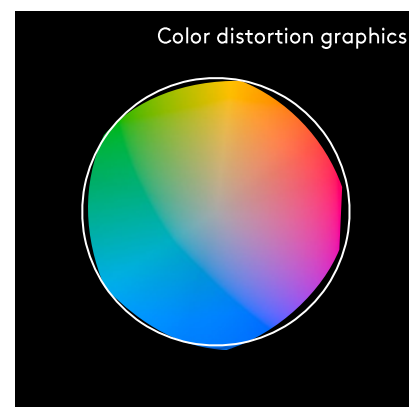
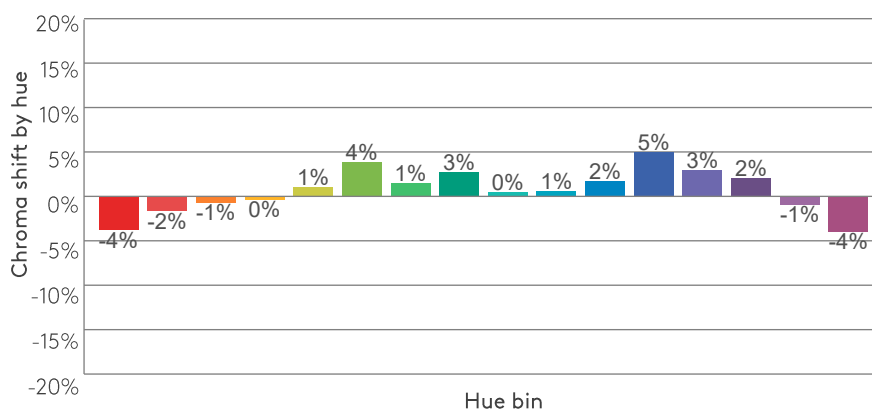
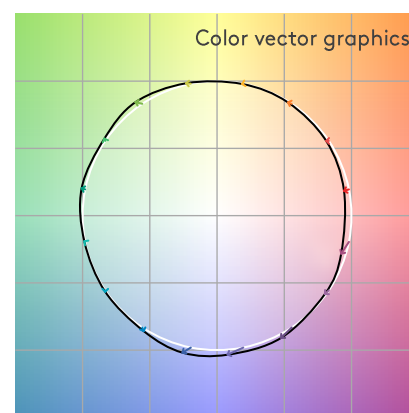
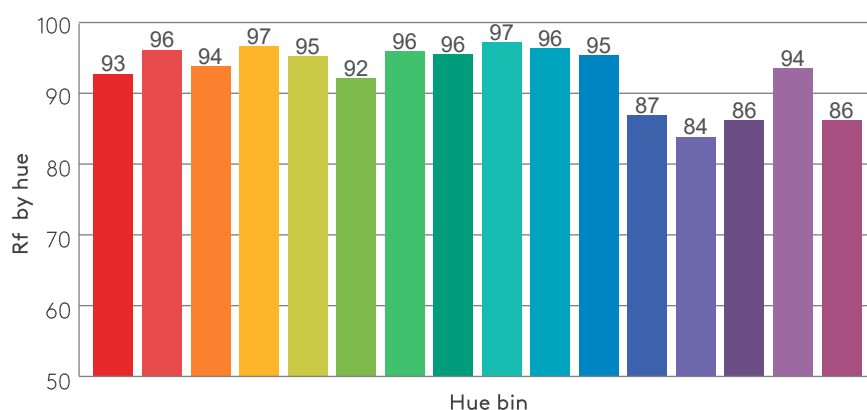
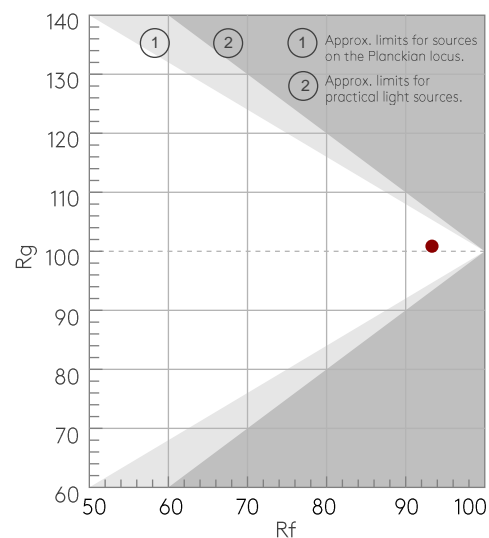
## COLOR PARAMETERS

Color temperature	Color rendering index	Red component	Color fidelity	Color gamut	Color quality scale	Color coordinate cie 1931	Color coordinate cie 1931	Color coordinate	Color coordinate	Color deviation from black body
CCT	CRI	CRI R9	TM30 Rf	TM30 Rg	CQS	x	y	u	v	Δuv
2695 K	96.4	72.5	93.3	100.9	92.9	0.461	0.411	0.263	0.352	0.0002

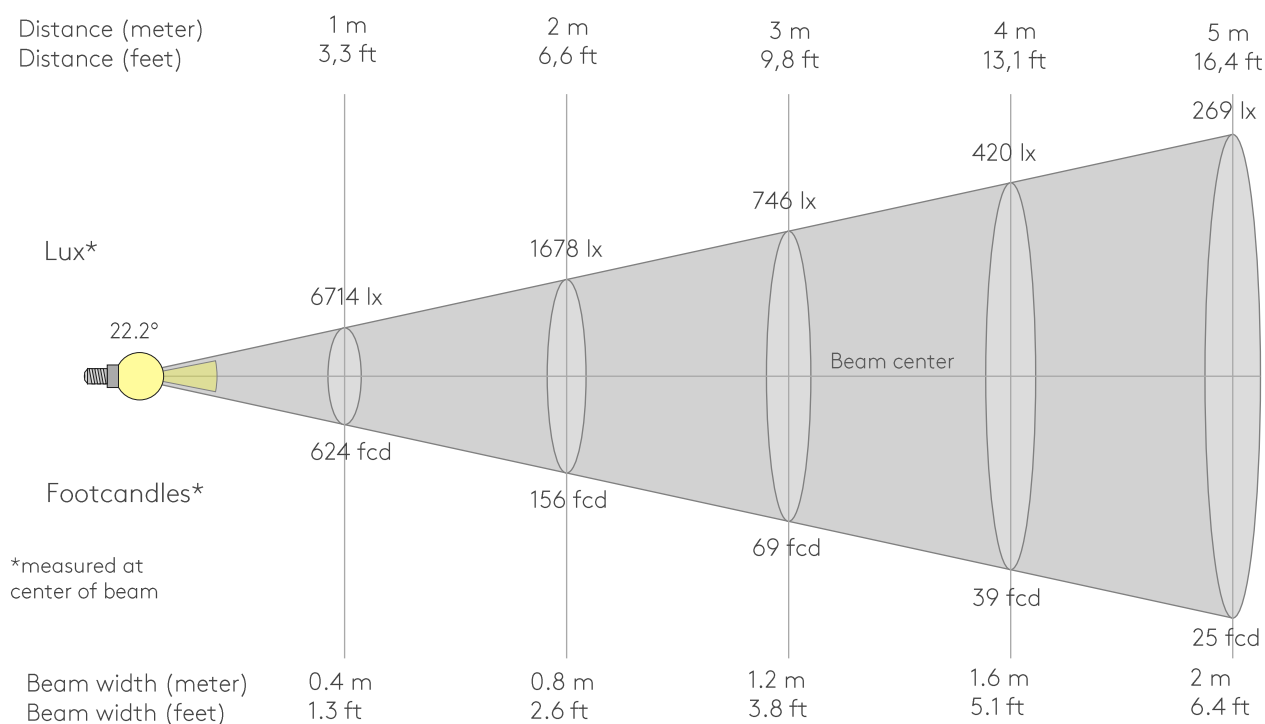
Rf 93.3  
Fidelity index Rf

Rg 100.9  
Gammut index Rg

Hue Bin	Rf	Graphic shifts (%)	
		Chroma	Hue
1	93	-4%	0%
2	96	-2%	1%
3	94	-1%	3%
4	97	0%	1%
5	95	1%	3%
6	92	4%	4%
7	96	1%	-1%
8	96	3%	0%
9	97	0%	-1%
10	96	1%	1%
11	95	2%	2%
12	87	5%	-5%
13	84	3%	-12%
14	86	2%	-11%
15	94	-1%	-4%
16	86	-4%	-10%



## BEAM DETAILS



Beam intensities from 1-20m

1m	2m	3m	4m	5m	6m	7m	8m	9m	10m	11m	12m	13m	14m	15m	16m	17m	18m	19m	20m
3.3ft	6.6ft	9.8ft	13.1ft	16.4ft	19.7ft	23ft	26.2ft	29.5ft	32.8ft	36.1ft	39.4ft	42.7ft	45.9ft	49.2ft	52.5ft	55.8ft	59.1ft	62.3ft	65.6ft
6714lx	1678lx	746lx	420lx	269lx	186lx	137lx	105lx	83lx	67lx	55lx	47lx	40lx	34lx	30lx	26lx	23lx	21lx	19lx	17lx
623.7fc	155.9fc	69.3fcd	39fcd	24.9fcd	17.3fcd	12.7fcd	9.7fcd	7.7fcd	6.2fcd	5.2fcd	4.3fcd	3.7fcd	3.2fcd	2.8fcd	2.4fcd	2.2fcd	1.9fcd	1.7fcd	1.6fcd

Intensities in 0° c-plane

0°	2°	4°	6°	8°	10°	12°	14°	16°	18°	20°	22°	24°	26°	28°	30°	32°	34°	36°	38°
6714	6624	6260	5633	4783	3851	2957	2173	1522	1042	724	512	365	262	190	135	98	67	47	27
100%	99%	93%	84%	71%	57%	44%	32%	23%	16%	11%	8%	5%	4%	3%	2%	1%	1%	1%	0%

Intensities in 90° c-plane

0°	2°	4°	6°	8°	10°	12°	14°	16°	18°	20°	22°	24°	26°	28°	30°	32°	34°	36°	38°
6714	6624	6260	5633	4783	3851	2957	2173	1522	1042	724	512	365	262	190	135	98	67	47	27
100%	99%	93%	84%	71%	57%	44%	32%	23%	16%	11%	8%	5%	4%	3%	2%	1%	1%	1%	0%

Intensities in 180° c-plane

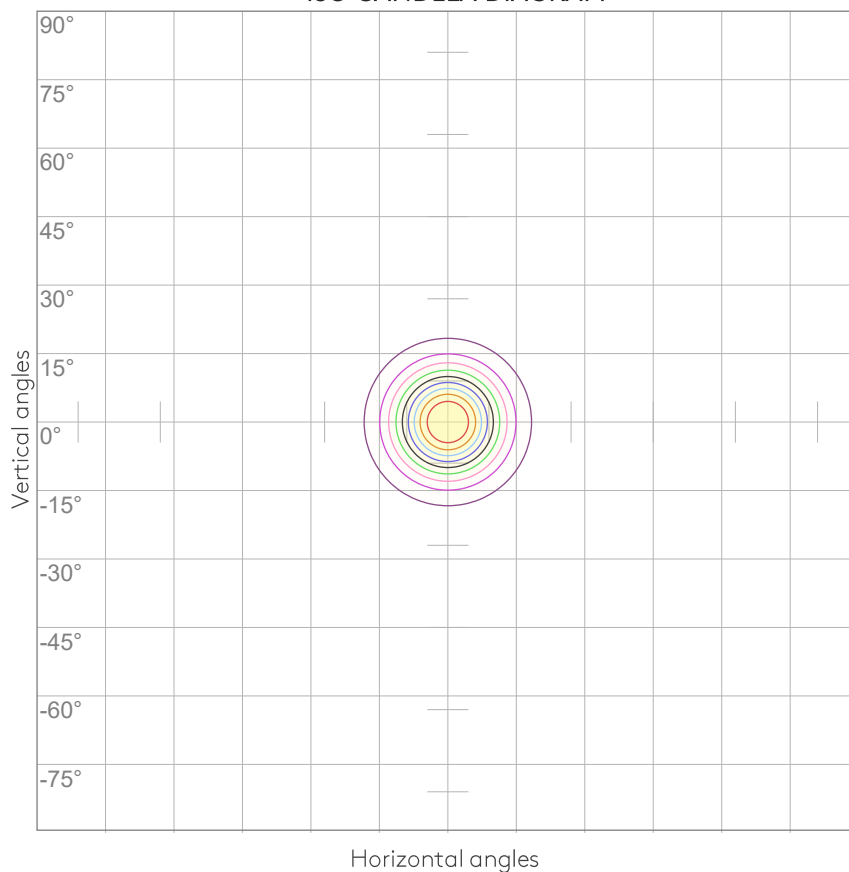
0°	2°	4°	6°	8°	10°	12°	14°	16°	18°	20°	22°	24°	26°	28°	30°	32°	34°	36°	38°
6714	6624	6260	5633	4783	3851	2957	2173	1522	1042	724	512	365	262	190	135	98	67	47	27
100%	99%	93%	84%	71%	57%	44%	32%	23%	16%	11%	8%	5%	4%	3%	2%	1%	1%	1%	0%

Intensities in 270° c-plane

0°	2°	4°	6°	8°	10°	12°	14°	16°	18°	20°	22°	24°	26°	28°	30°	32°	34°	36°	38°
6714	6624	6260	5633	4783	3851	2957	2173	1522	1042	724	512	365	262	190	135	98	67	47	27
100%	99%	93%	84%	71%	57%	44%	32%	23%	16%	11%	8%	5%	4%	3%	2%	1%	1%	1%	0%

Beam angle 50%	Field angle 10%	Cutoff angle 2,5%	Intensity ratio in 120° cone	Intensity ratio in 90° cone
22.2°	40.8°	57.5°	99.7%	99.5%

ISO CANDELA DIAGRAM



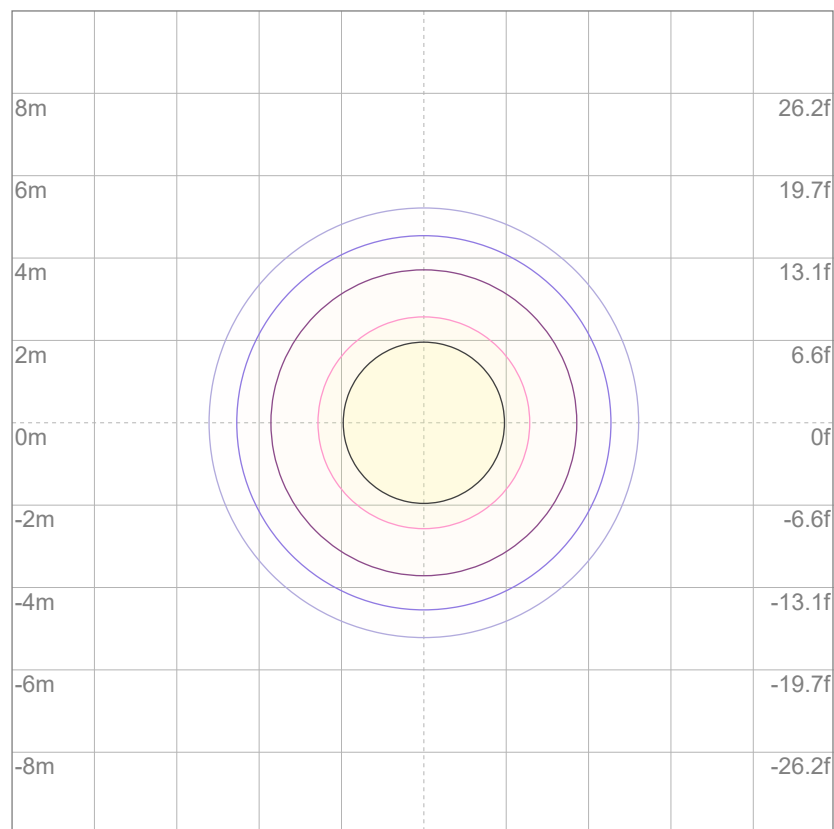
10%	671 cd
20%	1343 cd
30%	2014 cd
40%	2685 cd
50%	3357 cd
60%	4028 cd
70%	4700 cd
80%	5371 cd
90%	6042 cd

Conditions:

Number of c-planes: 8

Candela at center: 6714 cd

ISO LUX DIAGRAM



Mounting height: 10 meters (33 feet)

3%	2.01 lx
5%	3.36 lx
10%	6.71 lx
30%	20.1 lx
50%	{LUX_10M50} lx

Conditions:

Number of c-planes: 8

Lux at center: 67.1 lx

Lux distribution on a surface  
when lamp is mounted at 10  
meters from the surface.

## UGR

## GLARE EVALUATION ACCORDING TO UGR

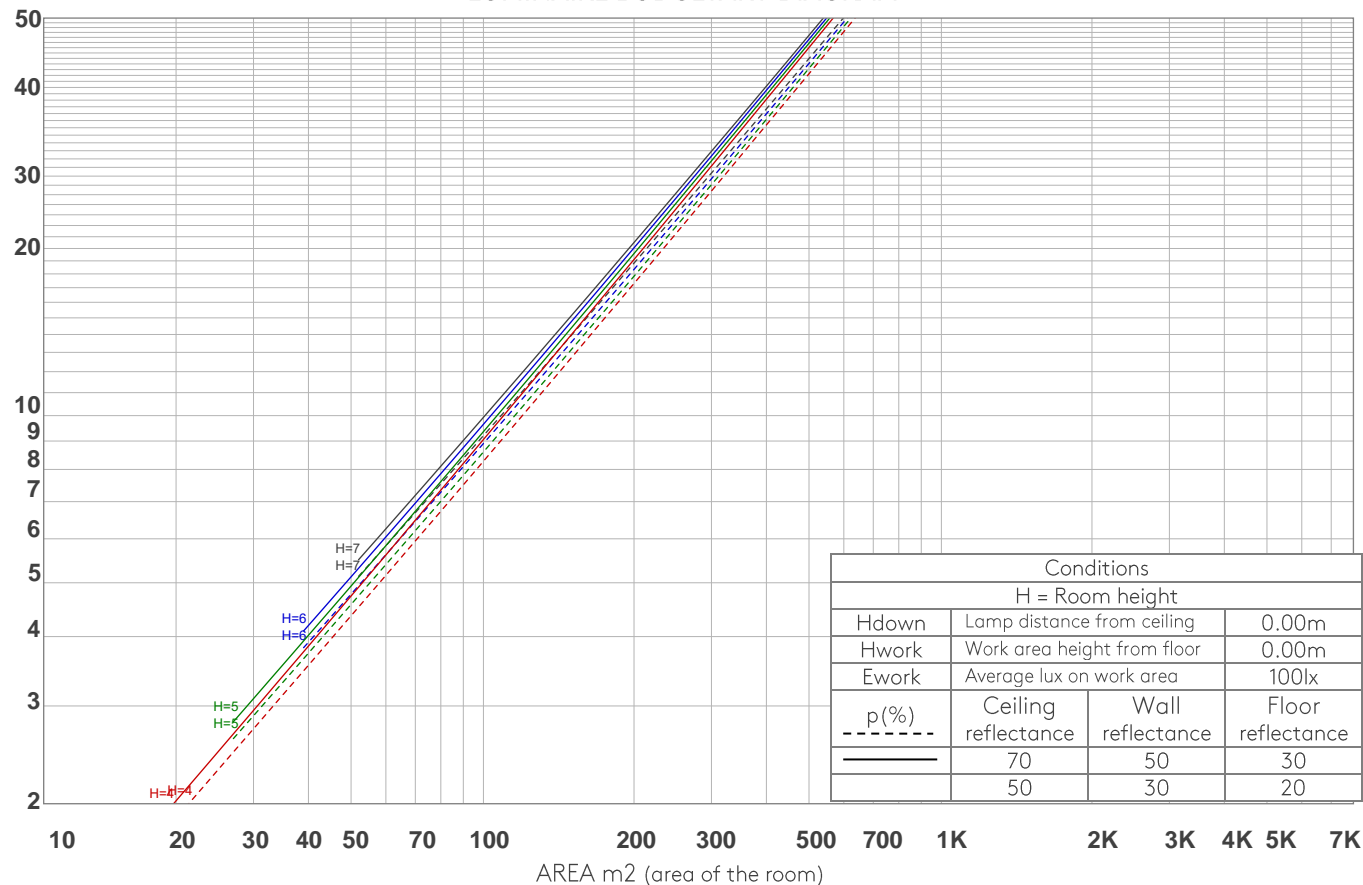
p Ceiling		70	70	50	50	30	70	70	50	50	30
p Walls		50	30	50	30	30	50	30	50	30	30
p Floor		20	20	20	20	20	20	20	20	20	20
Room size X      Y		Viewing direction at right angles to lamp axis					Viewing direction parallel to lamp axis				
2H	2H	11.0	11.4	11.1	11.6	11.7	11.0	11.4	11.1	11.6	11.7
	3H	10.7	11.2	11.0	11.4	11.6	10.7	11.2	11.0	11.4	11.6
	4H	10.6	11.1	11.0	11.4	11.6	10.6	11.1	11.0	11.4	11.6
	6H	10.6	11.0	10.9	11.3	11.7	10.6	11.0	10.9	11.3	11.7
	8H	10.6	11.0	10.9	11.3	11.7	10.6	11.0	10.9	11.3	11.7
	12H	10.5	10.9	10.9	11.3	11.7	10.5	10.9	10.9	11.3	11.7
4H	2H	10.6	11.1	11.0	11.3	11.6	10.6	11.1	11.0	11.3	11.6
	3H	10.5	10.9	10.8	11.3	11.7	10.5	10.9	10.8	11.3	11.7
	4H	10.4	10.7	10.8	11.2	11.7	10.4	10.7	10.8	11.2	11.7
	6H	10.3	10.7	10.8	11.0	11.4	10.3	10.7	10.8	11.0	11.4
	8H	10.2	10.6	10.7	11.0	11.3	10.2	10.6	10.7	11.0	11.3
	12H	10.2	10.5	10.7	10.9	11.3	10.2	10.5	10.7	10.9	11.3
8H	4H	10.2	10.6	10.7	10.9	11.3	10.2	10.6	10.7	10.9	11.3
	6H	10.2	10.4	10.7	10.9	11.4	10.2	10.4	10.7	10.9	11.4
	8H	10.2	10.4	10.7	10.9	11.5	10.2	10.4	10.7	10.9	11.5
	12H	10.1	10.3	10.7	10.8	11.4	10.1	10.3	10.7	10.8	11.4
12H	4H	10.1	10.4	10.6	10.8	11.3	10.1	10.4	10.6	10.8	11.3
	6H	10.2	10.3	10.7	10.9	11.5	10.2	10.3	10.7	10.9	11.5
	8H	10.1	10.3	10.7	10.8	11.4	10.1	10.3	10.7	10.8	11.4
Variation of the observer position for the luminaire distance S											
S = 1.0H		6.0 / -10.1					6.0 / -10.1				
S = 1.5H		8.7 / -10.8					8.7 / -10.8				
S = 2.0H		10.7 / -11.3					10.7 / -11.3				
Standard table		n/a					n/a				
Correction summand		n/a					n/a				
Corrected glare indices referring to 1213 lm total luminous flux											

COEFFICIENTS OF UTILIZATION

Ceiling reflectance	80				70				50			30			10			0
Wall reflectance	70	50	30	10	70	50	30	10	50	30	10	50	30	10	50	30	10	0
Floor reflectance	20	20	20	20	20	20	20	20	20	20	20	20	20	20	20	20	20	0
RCR	(RCR: Room Cavity Ratio) Room Values are expressed as percentage of Lumens delivered to the task surface																	
0	119	119	119	119	116	116	116	116	111	111	111	106	106	106	102	102	102	100
1	115	113	111	110	113	111	109	108	107	106	105	103	102	101	100	99	98	97
2	112	108	105	103	110	107	104	102	103	101	100	100	99	97	98	97	95	94
3	108	104	100	98	107	103	99	97	100	98	95	98	96	94	96	94	93	91
4	105	100	96	94	104	99	96	93	97	94	92	95	93	91	94	92	90	89
5	102	97	93	90	101	96	92	90	94	91	89	93	90	88	91	89	87	86
6	100	94	90	87	98	93	89	87	92	89	86	91	88	86	89	87	85	84
7	97	91	87	84	96	91	87	84	89	86	84	88	86	83	87	85	83	82
8	95	89	85	82	94	88	84	82	87	84	82	86	83	81	86	83	81	80
9	93	86	82	80	92	86	82	80	85	82	80	84	81	79	84	81	79	78
10	90	84	80	78	90	84	80	78	83	80	78	83	80	77	82	79	77	76

LAMPS (number of lamps)

LUMINAIRE BUDGETARY DIAGRAM



ZONAL LUMEN SUMMARY

0°-10°	10°-20°	20°-30°	30°-40°	40°-50°	50°-60°	60°-70°	70°-80°	80°-90°
500 lm	513 lm	153 lm	37.5 lm	4.96 lm	1.22 lm	0.330 lm	0.206 lm	0.210 lm
90°-100°	100°-110°	110°-120°	120°-130°	130°-140°	140°-150°	150°-160°	160°-170°	170°-180°
0.231 lm	0.219 lm	0.224 lm	0.204 lm	0.280 lm	0.466 lm	0.708 lm	0.556 lm	0.120 lm



FLICKER

FLICKER CURVE (COMPLETE SAMPLED)



FLICKER FRAME (FRAME OF ONE FLICKER)



FLICKER FFT (FREQUENCY SCOPE OF FLICKER)



FLICKER RESULTS:

Flicker frequency:	n/a Hz
Flicker index:	n/a
Flicker percentage:	n/a %
SVM: (Visual flicker)	n/a

FLICKER CONDITIONS:

Sample rate:	n/a samples/second
--------------	--------------------